

CYCLES AND INDETERMINACY IN OVERLAPPING
GENERATIONS ECONOMIES WITH
STONE-GEARY PREFERENCES

ERKKI KOSKELA
MIKKO PUHAKKA

CESIFO WORKING PAPER NO. 1737
CATEGORY 10: EMPIRICAL AND THEORETICAL METHODS
MAY 2006

An electronic version of the paper may be downloaded

- *from the SSRN website:* www.SSRN.com
- *from the RePEc website:* www.RePEc.org
- *from the CESifo website:* www.CESifo-group.de

CYCLES AND INDETERMINACY IN OVERLAPPING GENERATIONS ECONOMIES WITH STONE-GEARY PREFERENCES

Abstract

We investigate dynamics in an overlapping generations economy with Stone-Geary preferences. We show that a steady state exists, and furthermore and importantly, that there can be a multitude of two cycles even though intertemporal elasticity of substitution in consumption exceeds unity.

JEL Code: E21, E32.

Keywords: Stone-Geary preferences, overlapping generations economy, cycles and indeterminacy.

Erkki Koskela
Department of Economics
P.O. Box 17
00014 University of Helsinki
Finland
erkki.koskela@helsinki.fi

Mikko Puhakka
Department of Economics
P.O. Box 4600
University of Oulu
Finland
mikko.puhakka@oulu.fi

The authors thank *the Research Unit of Economic Structures and Growth (RUESG)* at the University of Helsinki and *the Yrjö Jahnsson Foundation* as well as *the Academy of Finland* (grant No. 1109089 to Koskela) for financial support.

1. Introduction

Necessities of consumption characterize a large set of goods. They are a key part of the linear expenditure system, which can be derived from the Stone-Geary preferences originally developed by Geary (1950-51). Stone (1954) utilized them in empirical work. These preferences have been used also in theoretical work (see e.g. Auerbach and Hines, 2002, and Azariadis, 1996).

Consumer with the Stone-Geary preferences gets utility from that part of consumption, which exceeds the subsistence level. These preferences are closely related to preferences with habit persistence. Lahiri and Puhakka (1998) have studied the implications of these preferences in an overlapping generations (OG) model with pure exchange. Among other things they showed that the possibility for cycles, with relatively weaker concavity of the utility function than in conventional specifications.

Koskela and Puhakka (2006) introduced logarithmic Stone-Geary preferences into a standard overlapping generations economy with pure exchange, and studied stability, indeterminacy and cycles. They showed that dynamics depend on the relative necessities of current and future consumption. In particular, a stable, and at the same time indeterminate, nontrivial steady state exists for parameter values, for which there is no such equilibrium in the model with purely logarithmic utility function. Moreover, the features of saving behavior lead to the possibility of period-doubling bifurcation (a two-cycle).

In this paper we generalize the model in Koskela and Puhakka (2006). Their results also hold with more general Stone-Geary preferences with an important exception that there are a multitude of two cycles although intertemporal elasticity of

substitution exceeds unity. As shown first by Grandmont (1985) (see also Gale, 1973) an overlapping generations economy with pure exchange can exhibit a stable monetary steady states and cycles, if intertemporal elasticity of substitution is smaller than unity.

Section 2 specifies the more general Stone-Geary utility function and presents its implications for saving behavior. Section 3 explores the dynamic properties of equilibrium. There is also a brief concluding section.

2. General Stone-Geary utility function and saving behavior

We analyze the dynamic implications of a perfect foresight overlapping generations economy under pure exchange, where consumers live for two periods. The general Stone-Geary preferences of the consumer are

$$(1) \quad v(c_1^t, c_2^t) = \frac{(c_1^t - a_1)^{1-\sigma}}{1-\sigma} + \beta \frac{(c_2^t - a_2)^{1-\sigma}}{1-\sigma},$$

where $1/\sigma$ is the intertemporal elasticity of substitution calculated for consumption over the subsistence level, β is the discount factor, and a_i is the exogenous level of subsistence. The measure of concavity of the periodic utility function is $-cu''/u' = \sigma c/(c - a)$. It is decreasing in consumption and increasing in subsistence level.

A representative consumer maximizes (1) subject to the periodic budget constraints

$$(2i) \quad c_1^t + s_t = y_1$$

$$(2ii) \quad c_2^t = R_{t+1}s_t + y_2,$$

¹ This formulation of preferences was originally not due to Geary and Stone. Literature calls these more general preferences Stone-Geary preferences, since they also lead to linear expenditure system (see e.g. Barro and Sala-i-Martin, 2004, p. 178).

where y_1 (y_2) is the endowment in the first (second) period, s_t the saving, R_{t+1} the interest factor from period t to period $t+1$, and c_1^t (c_2^t) the first (second) period consumption, respectively. For the problem to make sense the following inequality must be satisfied for the equilibrium interest factor

$$(3) \quad a_1 + \frac{a_2}{R} < y_1 + \frac{y_2}{R}.$$

This means that the point (a_1, a_2) should lie inside the budget line. For (3) to hold it is not necessary that $a_1 < y_1$ and $a_2 < y_2$ at the same time. If $a_1 < y_1$ and $a_2 < y_2$, we have the decision problem with well-known properties.

The decision problem becomes different when either $a_1 > y_1$ or $a_2 > y_2$. Figure 1 describes the budget set, when $y_1 - a_1 > 0$ and $y_2 - a_2 < 0$, so that saving is positive. In Figure 1 we need to have $R > \underline{R}$ for the decision problem to make sense. Inspecting Figure 1 reveals that $\underline{R} = (a_2 - y_2)/(y_1 - a_1)$.

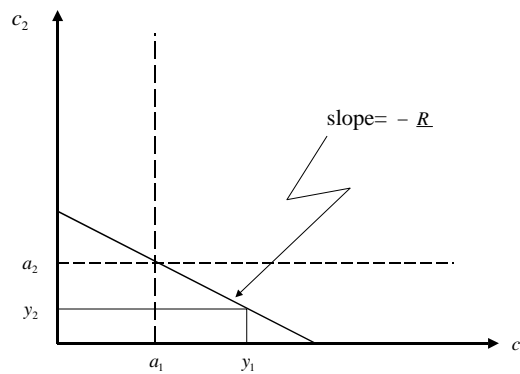


Figure 1.

The first-order condition for consumer's optimum, $(c_2^t - a_2)^\sigma / \beta(c_1^t - a_1)^\sigma = R_t$,

leads to the saving function

$$(4) \quad s(R; \bullet) = \frac{R^{\frac{1}{\sigma}} \beta^{\frac{1}{\sigma}}}{R + R^{\frac{1}{\sigma}} \beta^{\frac{1}{\sigma}}} (y_1 - a_1) - \frac{y_2 - a_2}{R + R^{\frac{1}{\sigma}} \beta^{\frac{1}{\sigma}}},$$

with the following property

$$(5) \quad \frac{\partial s}{\partial R} = \frac{\left(\frac{1}{\sigma} - 1\right) R^{\frac{1}{\sigma}} \beta^{\frac{1}{\sigma}}}{\left[R + R^{\frac{1}{\sigma}} \beta^{\frac{1}{\sigma}}\right]^2} (y_1 - a_1) + \frac{1 + \frac{1}{\sigma} R^{\frac{1}{\sigma}-1} \beta^{\frac{1}{\sigma}}}{\left[R + R^{\frac{1}{\sigma}} \beta^{\frac{1}{\sigma}}\right]^2} (y_2 - a_2)$$

If $a_1 < y_1$ and $a_2 < y_2$ we have the same result as with $a_1 = a_2 = 0$, i.e. with typical CRRA preferences. In this case it is necessary to have $\sigma > 1$ for saving to be a decreasing function of the interest factor. But if $a_1 > y_1$ or $a_2 > y_2$, then saving can be a decreasing function of the interest factor even though $\sigma < 1$.

3. Dynamic Equilibrium

We introduce an outside asset into the economy by assuming that government borrows (lends) from (to) the public. Government debt (or assets) at the beginning of the period is denoted by b_t , and the primary deficit by d_t so that government's budget constraint is

$$(6) \quad b_{t+1} = d_t + R_{t+1} b_t.$$

Since we want to concentrate on the fundamental dynamic implications of the model with Stone-Geary preferences, we assume the primary deficit to be zero, i.e. $d_t = 0$ for all t , and study the case with nonnegative government debt, i.e. $b_t \geq 0$. If we had

positive deficits, there would be two stationary equilibria in this economy.² Thus in the asset market equilibrium $b_t = s_t$, which leads to the following difference equation

$$(7) \quad s_{t+1} \equiv s(R_{t+2}) = R_{t+1}s(R_{t+1}) \equiv R_{t+1}s_t.$$

We study the case presented in Figure 1, when $y_1 - a_1 > 0$ and $y_2 - a_2 < 0$, so that saving is positive. This is a more interesting case than the other one (i.e. $a_2 < y_2$) since the restriction ($a_2 > y_2$) seems to be quite plausible in economies with retirement systems, where the subsistence consumption exceeds the second period endowment. Because saving is always positive, there is no interest factor such that saving is zero. Hence in (7) there is only one steady state such that $R_t = 1$ for all t , which is possible when $\underline{R} = (a_2 - y_2)/(y_1 - a_1) < 1$, i.e. under $a_2 - y_2 > 0$, and when the first period endowment is sufficiently higher than the subsistence consumption.

We analyze equation (7) by the geometric techniques of the reflected generational offer curves developed by Cass, Okuno and Zilcha (1979). Inverting the saving function and substituting for R_{t+1} in (7) we obtain the reflected generational offer curve.

To derive the equilibrium dynamics we take into account the periodic budget constraints and the fact that under zero primary deficit $R_{t+1} = s_{t+1}/s_t$. We can then rewrite the first-order condition as an equilibrium condition

$$(8) \quad s_t^{\frac{1}{\sigma}}(s_{t+1} + y_2 - a_2) = \beta^{\frac{1}{\sigma}} s_{t+1}^{\frac{1}{\sigma}}(y_1 - a_1 - s_t),$$

which implicitly defines the reflected generational offer curve. The steady state saving is

² The appearance of more than one steady state in models with positive deficits is basically known since Bailey (1956), see pp. 102-105 and especially his Figure 2.

$$(9) \quad s^* = \frac{(a_2 - y_2) + \beta^{\frac{1}{\sigma}}(y_1 - a_1)}{1 + \beta^{\frac{1}{\sigma}}}.$$

Using equation (8) and totally differentiating gives

$$(10) \quad \frac{ds_{t+1}}{ds_t} = \frac{-\beta^{\frac{1}{\sigma}} s_{t+1}^{\frac{1}{\sigma}} - (s_{t+1} + y_2 - a_2) \frac{1}{\sigma} s_t^{\frac{1}{\sigma}-1}}{s_t^{\frac{1}{\sigma}} - \beta^{\frac{1}{\sigma}}(y_1 - a_1 - s_t) \frac{1}{\sigma} s_{t+1}^{\frac{1}{\sigma}-1}} = \frac{-\frac{1}{y_1 - a_1 - s_t} - \frac{1}{\sigma s_t}}{\frac{1}{s_{t+1} - (a_2 - y_2)} - \frac{1}{\sigma s_{t+1}}}.$$

Because the maximum amount consumer can save is $y_1 - a_1$, the numerator of (10) is negative. Since $a_2 - y_2 > 0$, we can see that (10) is negative for $\sigma \geq 1$. If a_2 is large enough, (10) can be negative for $\sigma < 1$, which is not possible when $a_1 = a_2 = 0$.

Evaluating (10) at the steady state defined in (9) gives the following stability condition

$$(11) \quad \left[\frac{1}{2} \beta^{\frac{2}{\sigma}} + \left(\frac{1}{\sigma} - \frac{1}{2} \right) \beta^{\frac{1}{\sigma}} \right] (y_1 - a_1) < \left[\frac{1}{2} + \left(\frac{1}{\sigma} - \frac{1}{2} \right) \beta^{\frac{1}{\sigma}} \right] (a_2 - y_2).^3$$

Suppose now that $\sigma < 1$, $y_2 = 0$ and the discount factor, β , is very small. Then the left-hand side gets very small, but the right-hand side approaches the value of $(1/2)a_2$. In particular, as $\beta \rightarrow 0$, the steady state is stable, and at the same time indeterminate.⁴ As $\beta \rightarrow 1$ the stability condition becomes $y_1 - a_1 < a_2 - y_2$ and is thus independent of the coefficient, σ .

Moreover, the stability of the economy is more likely, the smaller is $y_1 - a_1$ and the higher is $a_2 - y_2$. As previously noted the condition, $a_2 - y_2 > 0$, is plausible in

³ For stability the value of the slope must be greater than minus unity. To derive (11) we have assumed that the offer curve is downward sloping, and initially $\sigma > 1$.

⁴ Guesnerie and Woodford (1992) discuss thoroughly the concept of indeterminacy in OG models, see chapter 5.

economies with retirement systems. The small difference, $y_1 - a_1 > 0$, describes an aspect of poor economies. Furthermore, it can be seen from equation (11) that higher subsistence requirements a_1 and a_2 make the economy more stable, and decrease the intertemporal elasticity of substitution $((c - a)/\sigma c)$.

We present an example by specifying $y_2 = 0$, $a_1 = a_2 = a$, and where $a = \alpha y_1$.

Then we can rewrite the stability condition as

$$(12) \quad LHS(\beta) \equiv \frac{\frac{1}{2}\beta^{\frac{2}{\sigma}} + (\frac{1}{\sigma} - \frac{1}{2})\beta^{\frac{1}{\sigma}}}{\frac{1}{2} + (\frac{1}{\sigma} - \frac{1}{2})\beta^{\frac{1}{\sigma}}} < \frac{\alpha}{1 - \alpha}.$$

The left-hand side is an increasing function of the discount factor, if $\sigma \leq 1$, and $LHS(1) = 1$, $LHS(0) = 0$, $0 < LHS(\beta) < 1$ for $0 < \beta < 1$. Then the condition in (12) implies an upper bound for the discount factor. For that upper bound to be less than unity, it must be the case that $\alpha < 1/2$ (see Figure 2). For discount factors $\beta < \beta'$ $LHS(\beta) < \alpha/(1 - \alpha)$, and the stability condition thus holds.

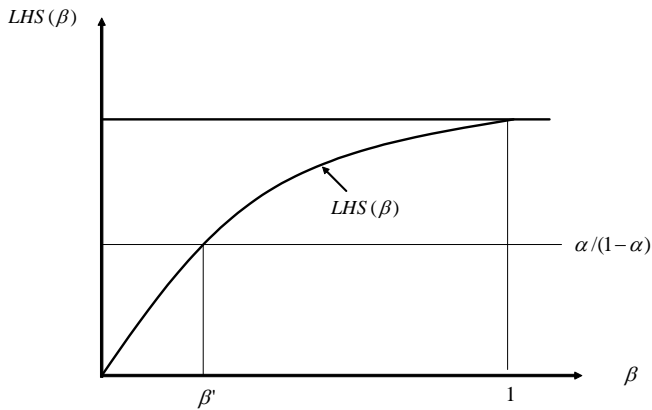


Figure 2.

Cycles can emerge in equilibrium under preferences without subsistence consumption, if intertemporal elasticity of substitution is smaller than unity (see Gale 1973, and in particular Grandmont 1985). We explore the existence of a period-doubling bifurcation (a two-cycle) for the case when intertemporal elasticity of substitution is higher than unity, $\sigma < 1$, by resorting to a numerical example.

We fix the parameters such that the slope of the reflected generational offer curve is slightly less than minus unity at the steady state. Then we find a pair of numbers, x and z (different from s^*) fulfilling (8) for $\sigma < 1$ such that the following equations hold

$$(13) \quad \frac{z + y_2 - a_2}{y_1 - a_1 - x} = \beta^{\frac{1}{\sigma}} \left(\frac{z}{x} \right)^{\frac{1}{\sigma}} \quad \text{and} \quad \frac{x + y_2 - a_2}{y_1 - a_1 - z} = \beta^{\frac{1}{\sigma}} \left(\frac{x}{z} \right)^{\frac{1}{\sigma}}.$$

The slope at the steady state is

$$(14) \quad \left. \frac{ds_{t+1}}{ds_t} \right|_{s_t=s^*} = \frac{-\beta^{\frac{1}{\sigma}} - \frac{\beta^{\frac{1}{\sigma}}(y_1 - a_1 - s^*)}{\sigma s^*}}{1 - \frac{\beta^{\frac{1}{\sigma}}(y_1 - a_1 - s^*)}{\sigma s^*}}.$$

We choose the parameters as follows: $\beta = 1/2$, $\sigma = .95$ and $y_1 = 1$. We know from (14) that the slope is sensitive to the values of necessities. We set the slope to be -1.001 , and choose the value of a_1 such that the slope indeed equals -1.001 . Such a value for a_1 (and indeed we assume the same value for a_2) is $.332782$. \underline{R} (in this case $a_2/(y_1 - a_1)$) is $.4987$. Using these values the steady state, s^* , will be $.441566$. Solving equations in (13) for these parameter values we get $x = .441564$ and $z = .441568$. The respective equilibrium interest factors are $.99999$ and 1.000009 so that the computed two-cycle is

feasible in the case of general Stone-Geary preferences as well. Of course the steady state is one solution for (13).

4. Conclusion

We have used an overlapping generations model with pure exchange and Stone-Geary preferences to study the dynamic properties of equilibrium in economies with positive levels of saving and public debt. We have shown that a stable nontrivial steady state exists. Furthermore, and importantly there can be a multitude of period-doubling bifurcations (two-cycles) in equilibrium even though the intertemporal elasticity of substitution is greater than one.

References:

- Auerbach, A.J. and J.R. Hines Jr., 2002, Taxation and Economic Efficiency, in Auerbach, A. and M. Feldstein, eds., *Handbook of Public Economics*, Vol.3 (North-Holland, Amsterdam) 1347-1421.
- Azariadis, C., 1996, The Economics of Poverty Traps. Part One: Complete Markets, *Journal of Economic Growth* 1, 449-486.
- Bailey, M.J., 1956, The Welfare Cost of Inflationary Finance, *Journal of Political Economy* 64, 93-110.
- Barro, R.J. and X. Sala-i-Martin, 2004, *Economic Growth*, 2nd edition (MIT Press, Cambridge, MA).
- Cass, D., M. Okuno and I. Zilcha, 1979, The Role of Money in Supporting the Pareto Optimality of Competitive Equilibrium in Consumption-Loan Type Models, *Journal of Economic Theory* 60, 277-305.
- Gale, D., 1973, Pure Exchange Equilibrium of Dynamic Economic Models, *Journal of Economic Theory* 6, 12-36.
- Geary, R.C., 1950-1951, A Note on "A Constant-Utility Index of the Cost of Living", *Review of Economic Studies* 18, 65-66.
- Grandmont, J-M., 1985, On Endogenous Competitive Business Cycles, *Econometrica* 53, 995-1045.
- Guesnerie, R. and M. Woodford, 1992, Endogenous Fluctuations, in Laffont, J.-J., ed., *Advances in Economic Theory. Sixth World Congress. Vol. II* (Cambridge University Press, Cambridge) 289-412.
- Koskela, E. and M. Puhakka, 2006, Stone-Geary Preferences in Overlapping Generations Economies under Pure Exchange: A Note, forthcoming in *Journal of*

Macroeconomics 29, (downloadable at:
<http://www.valt.helsinki.fi/raka/koskela/erkki.htm>).

Lahiri, A. and M. Puhakka, 1998, Habit Persistence in Overlapping Generations Economies under Pure Exchange, *Journal of Economic Theory* 78, 176-186.

Stone, R., 1954, Linear Expenditure Systems and Demand Analysis: An Application to the Pattern of British Demand, *Economic Journal* 64, 511-527.

CESifo Working Paper Series

(for full list see www.cesifo-group.de)

- 1673 Michael Rauber and Heinrich W. Ursprung, Evaluation of Researchers: A Life Cycle Analysis of German Academic Economists, February 2006
- 1674 Ernesto Reuben and Frans van Winden, Reciprocity and Emotions when Reciprocators Know each other, February 2006
- 1675 Assar Lindbeck and Mats Persson, A Model of Income Insurance and Social Norms, February 2006
- 1676 Horst Raff, Michael Ryan and Frank Staehler, Asset Ownership and Foreign-Market Entry, February 2006
- 1677 Miguel Portela, Rob Alessie and Coen Teulings, Measurement Error in Education and Growth Regressions, February 2006
- 1678 Andreas Haufler, Alexander Klemm and Guttorm Schjelderup, Globalisation and the Mix of Wage and Profit Taxes, February 2006
- 1679 Kurt R. Brekke and Lars Sjørgard, Public versus Private Health Care in a National Health Service, March 2006
- 1680 Dominik Grafenhofer, Christian Jaag, Christian Keuschnigg and Mirela Keuschnigg, Probabilistic Aging, March 2006
- 1681 Wladimir Raymond, Pierre Mohnen, Franz Palm and Sybrand Schim van der Loeff, Persistence of Innovation in Dutch Manufacturing: Is it Spurious?, March 2006
- 1682 Andrea Colciago, V. Anton Muscatelli, Tiziano Ropele and Patrizio Tirelli, The Role of Fiscal Policy in a Monetary Union: Are National Automatic Stabilizers Effective?, March 2006
- 1683 Mario Jametti and Thomas von Ungern-Sternberg, Risk Selection in Natural Disaster Insurance – the Case of France, March 2006
- 1684 Ken Sennewald and Klaus Waelde, “Itô’s Lemma“ and the Bellman Equation for Poisson Processes: An Applied View, March 2006
- 1685 Ernesto Reuben and Frans van Winden, Negative Reciprocity and the Interaction of Emotions and Fairness Norms, March 2006
- 1686 Françoise Forges, The Ex Ante Incentive Compatible Core in Exchange Economies with and without Indivisibilities, March 2006
- 1687 Assar Lindbeck, Mårten Palme and Mats Persson, Job Security and Work Absence: Evidence from a Natural Experiment, March 2006

- 1688 Sebastian Buhai and Coen Teulings, Tenure Profiles and Efficient Separation in a Stochastic Productivity Model, March 2006
- 1689 Gebhard Kirchgaessner and Silika Prohl, Sustainability of Swiss Fiscal Policy, March 2006
- 1690 A. Lans Bovenberg and Peter Birch Sørensen, Optimal Taxation and Social Insurance in a Lifetime Perspective, March 2006
- 1691 Moritz Schularick and Thomas M. Steger, Does Financial Integration Spur Economic Growth? New Evidence from the First Era of Financial Globalization, March 2006
- 1692 Burkhard Heer and Alfred Maussner, Business Cycle Dynamics of a New Keynesian Overlapping Generations Model with Progressive Income Taxation, March 2006
- 1693 Jarko Fidrmuc and Iikka Korhonen, Meta-Analysis of the Business Cycle Correlation between the Euro Area and the CEECs, March 2006
- 1694 Steffen Henzel and Timo Wollmershaeuser, The New Keynesian Phillips Curve and the Role of Expectations: Evidence from the Ifo World Economic Survey, March 2006
- 1695 Yin-Wong Cheung, An Empirical Model of Daily Highs and Lows, March 2006
- 1696 Scott Alan Carson, African-American and White Living Standards in the 19th Century American South: A Biological Comparison, March 2006
- 1697 Helge Berger, Optimal Central Bank Design: Benchmarks for the ECB, March 2006
- 1698 Vjollca Sadiraj, Jan Tuinstra and Frans van Winden, On the Size of the Winning Set in the Presence of Interest Groups, April 2006
- 1699 Martin Gassebner, Michael Lamla and Jan-Egbert Sturm, Economic, Demographic and Political Determinants of Pollution Reassessed: A Sensitivity Analysis, April 2006
- 1700 Louis N. Christofides and Amy Chen Peng, Major Provisions of Labour Contracts and their Theoretical Coherence, April 2006
- 1701 Christian Groth, Karl-Josef Koch and Thomas M. Steger, Rethinking the Concept of Long-Run Economic Growth, April 2006
- 1702 Dirk Schindler and Guttorm Schjelderup, Company Tax Reform in Europe and its Effect on Collusive Behavior, April 2006
- 1703 Françoise Forges and Enrico Minelli, Afriat's Theorem for General Budget Sets, April 2006
- 1704 M. Hashem Pesaran, Ron P. Smith, Takashi Yamagata and Liudmyla Hvozdyk, Pairwise Tests of Purchasing Power Parity Using Aggregate and Disaggregate Price Measures, April 2006

- 1705 Piero Gottardi and Felix Kubler, Social Security and Risk Sharing, April 2006
- 1706 Giacomo Corneo and Christina M. Fong, What's the Monetary Value of Distributive Justice?, April 2006
- 1707 Andreas Knabe, Ronnie Schoeb and Joachim Weimann, Marginal Employment Subsidization: A New Concept and a Reappraisal, April 2006
- 1708 Hans-Werner Sinn, The Pathological Export Boom and the Bazaar Effect - How to Solve the German Puzzle, April 2006
- 1709 Helge Berger and Stephan Danninger, The Employment Effects of Labor and Product Markets Deregulation and their Implications for Structural Reform, May 2006
- 1710 Michael Ehrmann and Marcel Fratzscher, Global Financial Transmission of Monetary Policy Shocks, May 2006
- 1711 Carsten Eckel and Hartmut Egger, Wage Bargaining and Multinational Firms in General Equilibrium, May 2006
- 1712 Mathias Hoffmann, Proprietary Income, Entrepreneurial Risk, and the Predictability of U.S. Stock Returns, May 2006
- 1713 Marc-Andreas Muendler and Sascha O. Becker, Margins of Multinational Labor Substitution, May 2006
- 1714 Surajeet Chakravarty and W. Bentley MacLeod, Construction Contracts (or "How to Get the Right Building at the Right Price?"), May 2006
- 1715 David Encaoua and Yassine Lefouili, Choosing Intellectual Protection: Imitation, Patent Strength and Licensing, May 2006
- 1716 Chris van Klaveren, Bernard van Praag and Henriette Maassen van den Brink, Empirical Estimation Results of a Collective Household Time Allocation Model, May 2006
- 1717 Paul De Grauwe and Agnieszka Markiewicz, Learning to Forecast the Exchange Rate: Two Competing Approaches, May 2006
- 1718 Sijbren Cnossen, Tobacco Taxation in the European Union, May 2006
- 1719 Marcel Gérard and Fernando Ruiz, Interjurisdictional Competition for Higher Education and Firms, May 2006
- 1720 Ronald McKinnon and Gunther Schnabl, China's Exchange Rate and International Adjustment in Wages, Prices, and Interest Rates: Japan Déjà Vu?, May 2006
- 1721 Paolo M. Panteghini, The Capital Structure of Multinational Companies under Tax Competition, May 2006

- 1722 Johannes Becker, Clemens Fuest and Thomas Hemmelgarn, Corporate Tax Reform and Foreign Direct Investment in Germany – Evidence from Firm-Level Data, May 2006
- 1723 Christian Kleiber, Martin Sexauer and Klaus Waelde, Bequests, Taxation and the Distribution of Wealth in a General Equilibrium Model, May 2006
- 1724 Axel Dreher and Jan-Egbert Sturm, Do IMF and World Bank Influence Voting in the UN General Assembly?, May 2006
- 1725 Swapan K. Bhattacharya and Biswa N. Bhattacharyay, Prospects of Regional Cooperation in Trade, Investment and Finance in Asia: An Empirical Analysis on BIMSTEC Countries and Japan, May 2006
- 1726 Philippe Choné and Laurent Linnemer, Assessing Horizontal Mergers under Uncertain Efficiency Gains, May 2006
- 1727 Daniel Houser and Thomas Stratmann, Selling Favors in the Lab: Experiments on Campaign Finance Reform, May 2006
- 1728 E. Maarten Bosker, Steven Brakman, Harry Garretsen and Marc Schramm, A Century of Shocks: The Evolution of the German City Size Distribution 1925 – 1999, May 2006
- 1729 Clive Bell and Hans Gersbach, Growth and Enduring Epidemic Diseases, May 2006
- 1730 W. Bentley MacLeod, Reputations, Relationships and the Enforcement of Incomplete Contracts, May 2006
- 1731 Jan K. Brueckner and Ricardo Flores-Fillol, Airline Schedule Competition: Product-Quality Choice in a Duopoly Model, May 2006
- 1732 Kerstin Bernoth and Guntram B. Wolff, Fool the Markets? Creative Accounting, Fiscal Transparency and Sovereign Risk Premia, May 2006
- 1733 Emmanuelle Auriol and Pierre M. Picard, Government Outsourcing: Public Contracting with Private Monopoly, May 2006
- 1734 Guglielmo Maria Caporale and Luis A. Gil-Alana, Modelling Structural Breaks in the US, UK and Japanese Unemployment Rates, May 2006
- 1735 Emily J. Blanchard, Reevaluating the Role of Trade Agreements: Does Investment Globalization Make the WTO Obsolete?, May 2006
- 1736 Per Engström and Bertil Holmlund, Tax Evasion and Self-Employment in a High-Tax Country: Evidence from Sweden, May 2006
- 1737 Erkki Koskela and Mikko Puhakka, Cycles and Indeterminacy in Overlapping Generations Economies with Stone-Geary Preferences, May 2006